



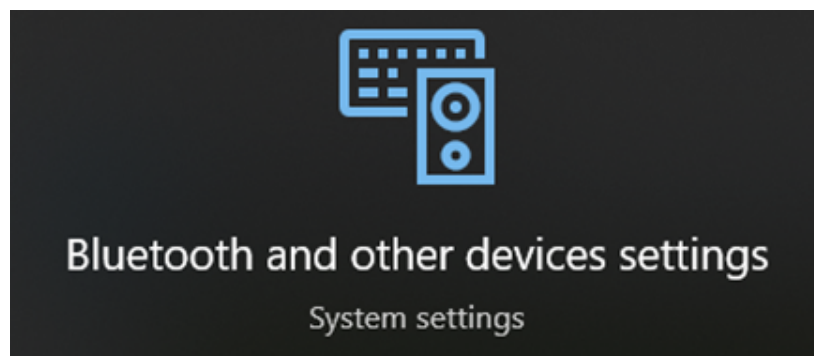
**RIGEL MEDICAL**  
GMC-INSTRUMENTS GROUP

## Bluetooth pairing using the new BT module (P serial number onwards)

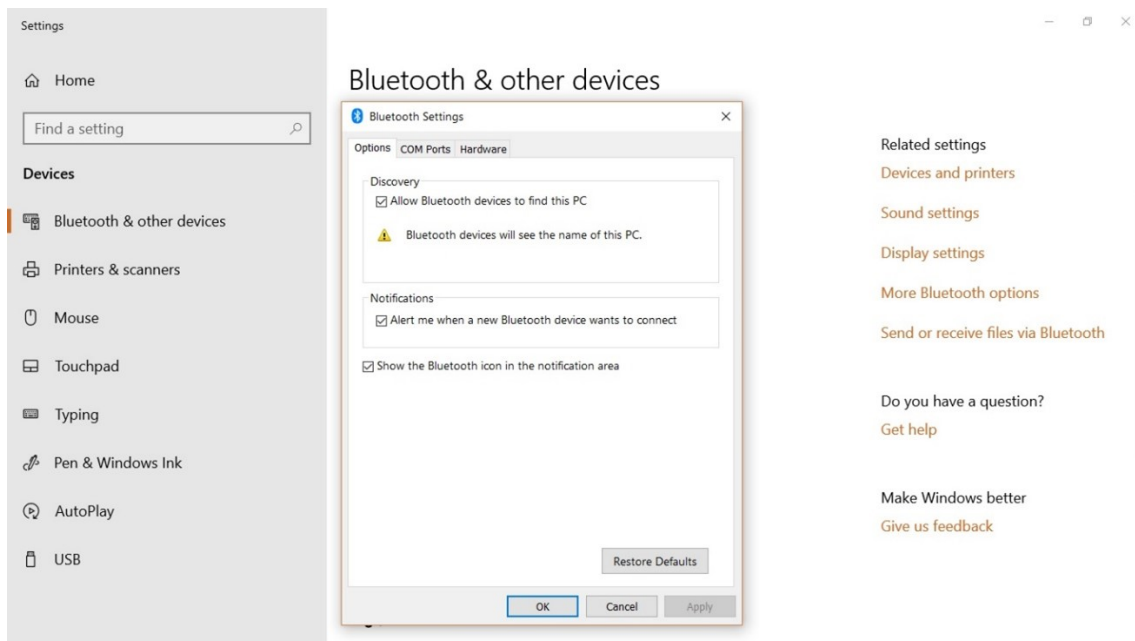
Firstly, a pin number must be set on the 288+ device. This menu can be accessed through Menu > Setup > Bluetooth Favourites



Open your Bluetooth settings on your PC



It's necessary to allow all BT devices to find your PC



Add the tester and wait for it to confirm that it has been paired successfully.

It may be a requirement to have the free Data Transfer program or Rigel Med-eBase open during pairing. Both are downloadable from our website.

The free software is available here:

<https://www.rigelmedical.com/gb/support/electrical-safety-testing/406a913-288-plus/software-updates/174-data-transfer-v1-03/>



The pairing will create an incoming and outgoing connection with a COM port for each

The **outgoing** connection will be used for the download to Med-eBase or the Data Transfer software

#### Bluetooth & other devices

 On

Now discoverable as "SELLT143"

#### Mouse, keyboard & pen



2.4G Wireless Mouse



Dell KB216 Wired Keyboard



Dell MS116 USB Optical Mouse

#### Audio



DELL PRO STEREO HEADSET UC150

#### Other devices



Base System Device



Dell dock



DELL P2219H



DELL P2219H



Realtek USB GbE Family Controller  
Connected to USB 3.0



Rigel 288+ (20P-0349)

Paired

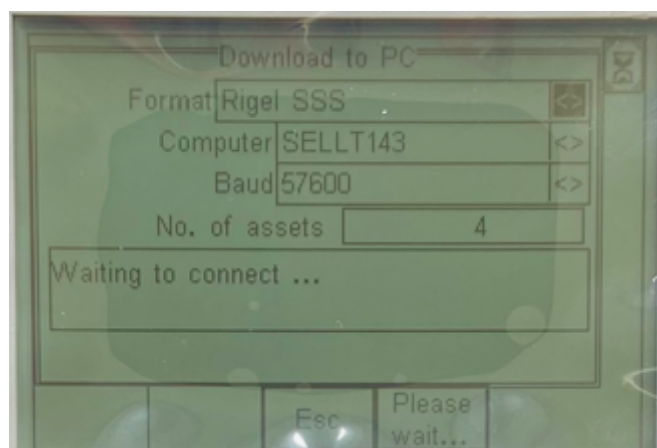


### Download to Med-eBase by selecting to data transfer to your PC

Format: .SSS

Select your PC as the Bluetooth device

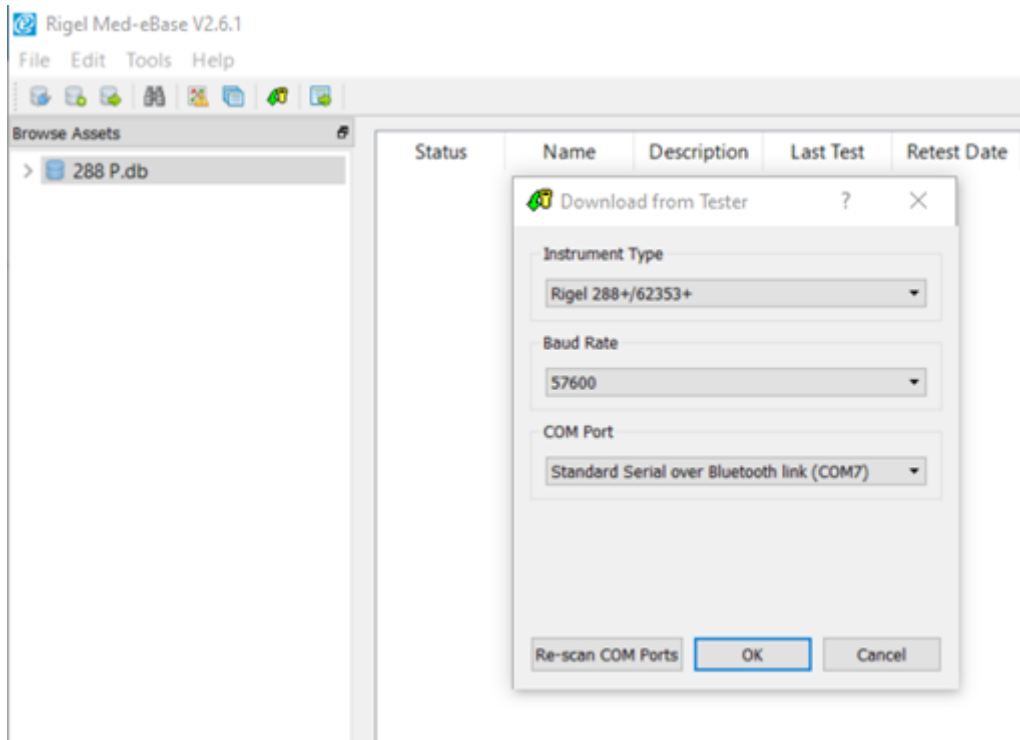
Baud: 57600



Open Med-eBase

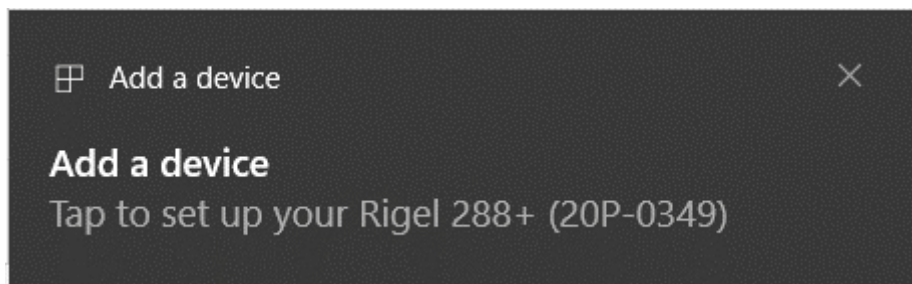
Select your outgoing com port

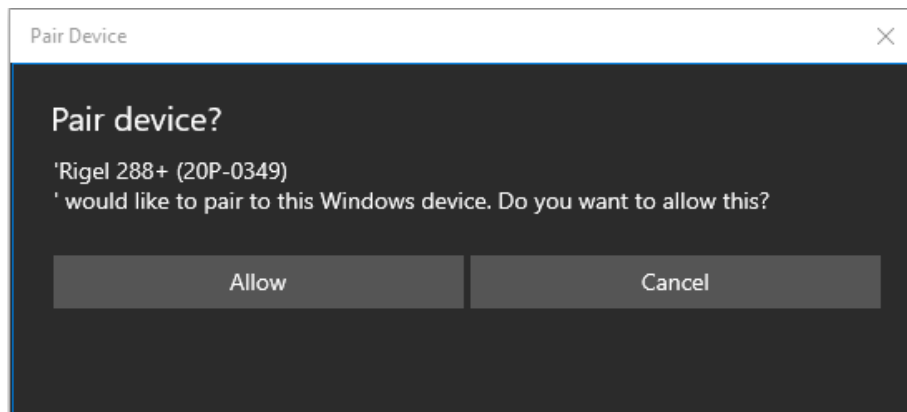
Click on OK



A message asking for permission will appear

Click on the message then allow permission for the connection





The option will now be available on your tester

Press F4 to send the test data to Med-eBase

The tests will be downloaded and shown in the asset list

	Status	Name	Description	Last Test	Retest Date	Client	Site	Location	Manufacturer	Model	Serial Number	Service Code
1	✖	1111		22/06/2022	22/12/2022		Site 1	Location 1				
2	✔	2222		22/06/2022	22/12/2022		Site 1	Location 1				
3	✔	3333		22/06/2022	22/12/2022		Site 1	Location 1				
4	✖	5555		22/06/2022	22/12/2022		Site 2	Location 2				

### Download to your PC using Data Transfer

Select F4 on the 288+ and then Data transfer

On the PC, open the DataTransfer.exe program (This is available as a free download from [rigelmedical.com](http://rigelmedical.com))

Select Capture then start capture.

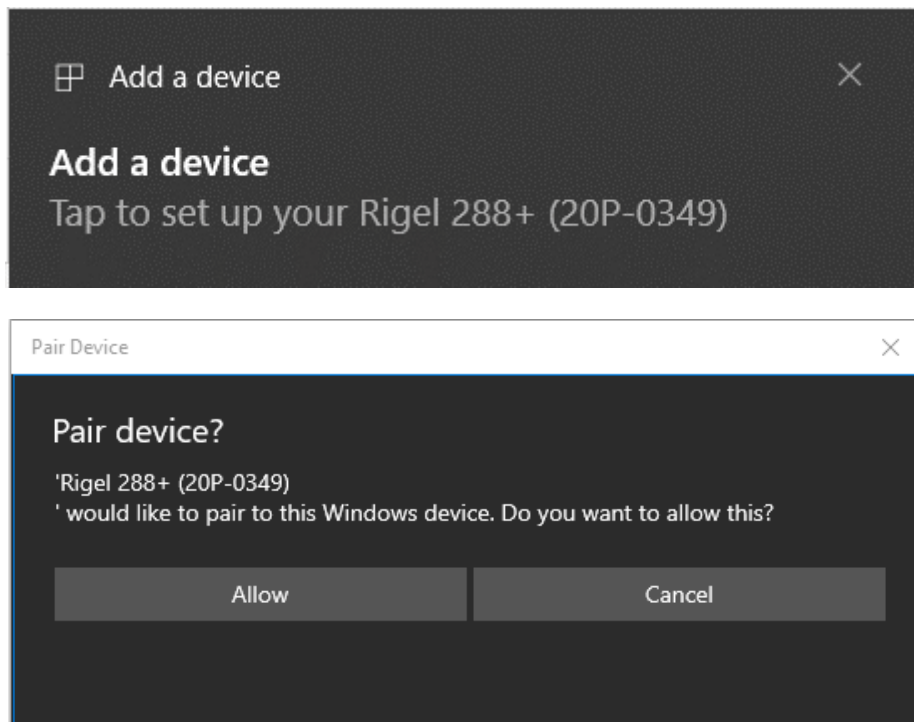
Choose a save name and location and change the file type to either .csv or .txt and press Save

Back on the Rigel device select Download to PC then F4 to confirm

An hourglass appears in the right hand corner while the Rigel device tries to pair.

On the PC a message asking for permission will appear.

Click on the message then allow permission for the connection.



F4 Send to start sending data from the tester.

Once the transfer of data is complete go to the Datatransfer.exe program  
select Capture then stop capture.

The data will now be saved in your chosen location as either a csv or txt file.

If you require more help, please contact us at  
<https://www.seaward.com/gb/enquire/>.